



Kamiak Butte Amateur Repeater Association Camp Out & Annual Meeting, July 27 -29, 2012 All are welcome!



Here's your chance to eye-ball each other, along with camping, swimming, fishing, schmoozing & just generally Hamming it up. This is an annual Ham-O-Rama & summer bash. Do not miss it!

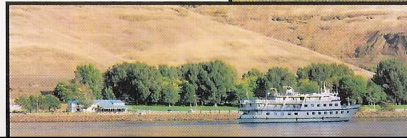
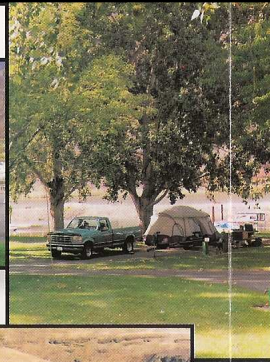
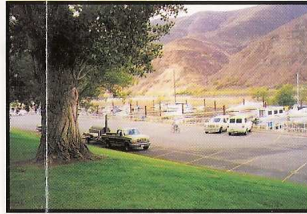
The Port of Whitman County maintains Boyer Park and Marina which is leased from the U.S. Army Corps of Engineers. The park has a full-time supervisor and concessionaire ready and willing to help with the needs of recreational enthusiasts.

The Marina provides free launching alongside a service dock where gasoline is available. Moorages conveniently accommodate 150 boats and can be rented on a daily or monthly basis.

Boyer Park Boatel offers four pleasant rooms for your overnight stay. A fully accessible boatel room is available on request.

Boyer Park Restaurant offers a relaxing atmosphere and a varied menu. Covered shelters accommodating 50 are available for rental for those special gatherings. A convenience and RV store is handy for those forgotten items.

Boyer Park offers the **Snake River Trail** for

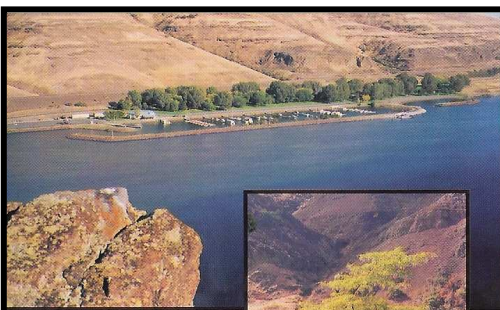


rollerblading, biking or a leisurely walk.

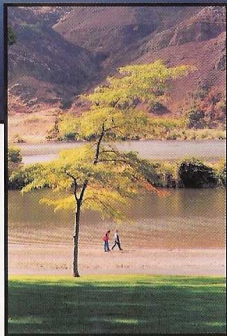
The enclosed swimming area, sandy beach, and picnic facilities make a perfect setting for the gathering of family and friends.

Overnight camping sites have all the extras... with water, electricity, sewer hookups, garbage collection, dump station for holding tanks, hot showers, rest rooms, laundry facilities, and picnic tables. All facilities are open 7 days a week from mid-April until mid-October.

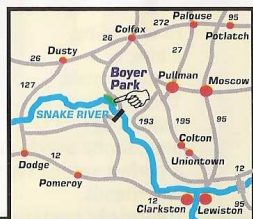
Lower Granite Lock and Dam is 2 miles from Boyer Park. The Visitor Center contains a Fish Viewing Room and Counting Station.



Boyer Park and Marina is a great place to be on a hot and sunny day!



This 140 acre site is situated on the scenic Snake River about 20 miles southeast of Pullman, Washington and offers many kinds of recreational enjoyment from fishing, boating, swimming, camping, picnicking to just spending a lazy day on the beach.



Come to the KBARA Camp Out & Annual Meeting at beautiful Boyer Park & Marina, 1753 Granite Rd, Colfax, WA 99111 on the Snake River, just downriver from the Lower Granite Dam.

PANCAKE BREAKFAST: Saturday, July 28, 2012, 8AM

ANNUAL MEETING: Saturday, July 28, 2012, 3PM

POTLUCK DINNER: Following the annual meeting, around 5PM, July 28, 2012

TALK-IN FREQUENCY: 146.74 MHz (-) repeater & 146.520 MHz simplex

DIRECTIONS TO BOYER PARK: from Spokane drive south on Hwy. 195 to Colfax; drive through town on Main St., following the sign to Almota going up the hill (just past Eddy's Chinese Restaurant on your right); continue to follow the signs to Almota & Boyer Park/Lower Granite Dam; drive time about 1 1/2 hours & 77 miles from Spokane. From Pullman, & points south, from Hwy. 195 at Pullman, take Hwy 194 west, following the signs to Almota & Boyer Park/Lower Granite Dam.

FOR INFO ABOUT BOYER PARK & MARINA call 509-397-3208 or visit www.bpark.biz; in KBARA group area sites 2-7, partial hookup sites \$27 per night, tents \$12; sites available Friday, 7/27 2PM to 7/29 2PM; for reservations contact Betsy, N7WRQ, phone: 509-509-448-5821, e-mail: n7wrq@aol.com

